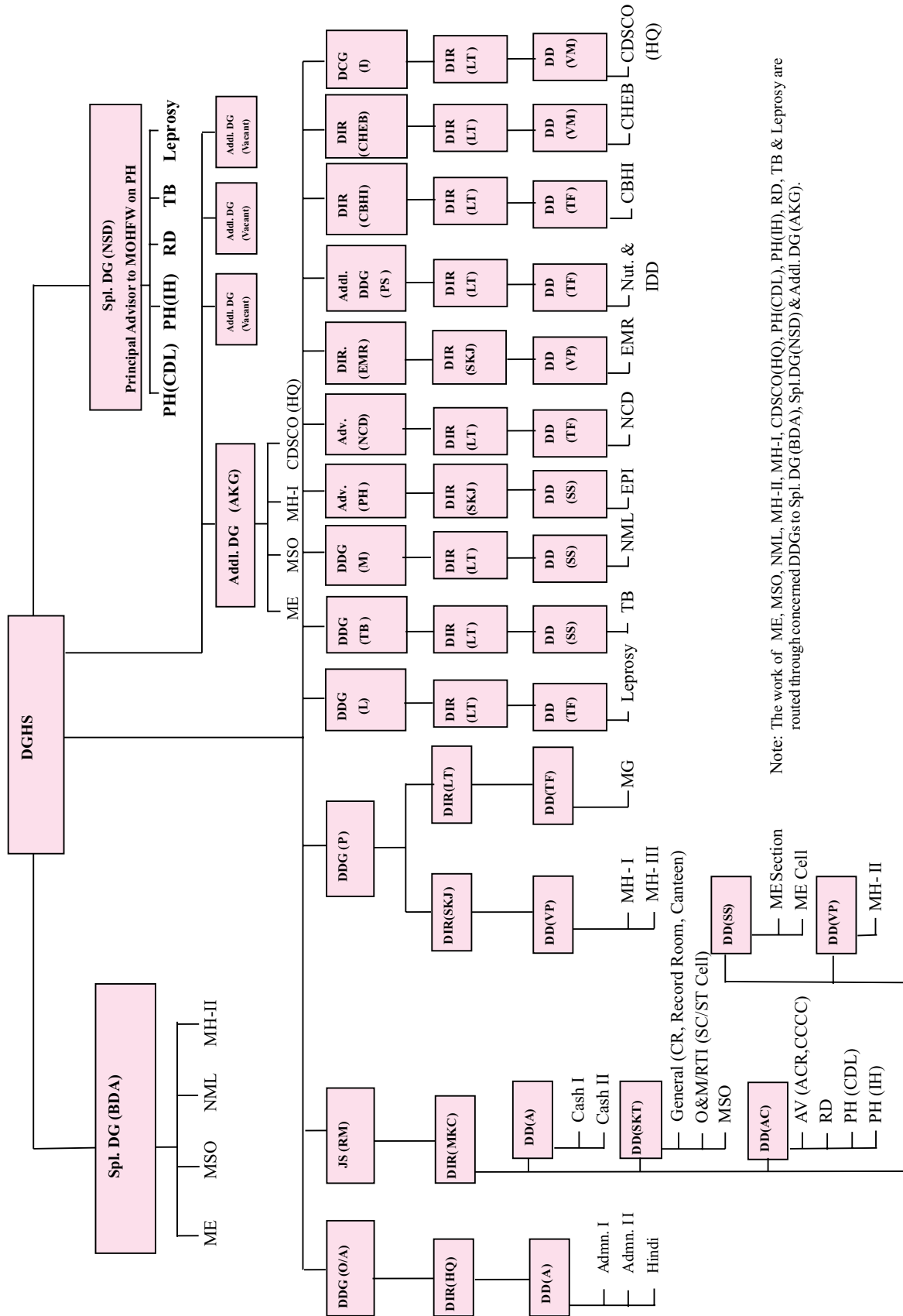


Organization Chart
of
Directorate General of
Health Services



Note: The work of ME, MSO, NML, MH-II, MH-I, CDSCO(HQ), PH(CDL), PH(IH), RD, TB & Leprosy are routed through concerned DDGs to Spl. DG (BDA), Spl. DG (NSD) & Addl. DG (AKG).